

Insera in-the-ear (ITE) hearing aid guide



Driven by **Tempus**



unitron™ Hearing matters

A Sonova brand

Thank you

Thank you for choosing these hearing aids.

We care deeply about people with hearing loss. We work closely with hearing healthcare professionals to make advanced, purpose-driven solutions available to everyone. Because hearing matters.

This user guide applies to the following models:

Year of introduction: 2017

T Insera™ Pro

T Insera™ 800

T Insera™ 700

T Insera™ 600

T Insera™ 500

Your hearing aids

Hearing healthcare professional: _____

Telephone: _____

Model: _____

Serial number: _____

Replacement batteries:

☐ Size 10A

☐ Size 312

☐ Size 13

Warranty: _____

Program 1 is for: _____

Program 2 is for: _____

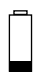
Program 3 is for: _____

Program 4 is for: _____

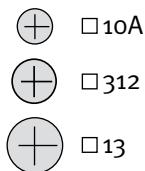
Date of purchase: _____

Quick reference

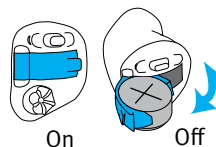
Low battery warning

 2 beeps every 30 minutes

Battery size



On/Off



Changing batteries

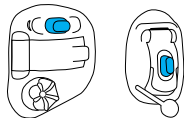


Battery symbol



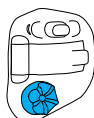
Battery symbol

Push button



□ switching programs
□ volume control

Rotary dial



□ volume control
forward=louder,
back=softer

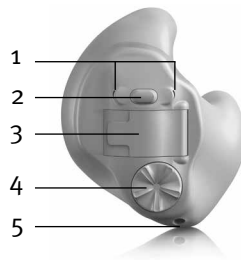
Table of contents

Your hearing aids at a glance	2
Warnings	4
SoundCore technology.....	9
EarMatch	9
Putting your hearing aids in your ears.....	10
Turning your hearing aids on and off	12
Battery information.....	13
Tinnitus masker	16
Operating instructions	19
Using the telephone.....	26
Protecting your hearing aids	29
Cleaning your hearing aids.....	30
Accessories	31
Assistive listening devices	34
Troubleshooting guide	35
Warning to hearing aid dispensers (to comply with the U.S. Food and Drug Administration (FDA) regulations)	39
Information and explanation of symbols.....	41
Compliance information.....	43
Patient feedback.....	45
Additional notes.....	46

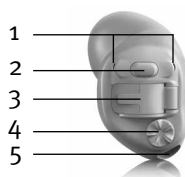
Your hearing aids at a glance

- 1 **Microphone** - sound enters your hearing aids through the microphones. **Microphone shield** - protects microphones from dirt & debris
- 2 **Push button** - switches between listening programs or changes the volume level, depending on your customized fitting
- 3 **Battery door (on & off)** - close the door to turn on your hearing aids, open the door all the way to turn off your hearing aid or to change the battery
- 4 **Rotary dial** - controls the volume
- 5 **Vent** - aids in the reduction of occlusion making your own voice sound better
- 6 **Removal handle** - assists in removing very small hearing aids from the ear canal

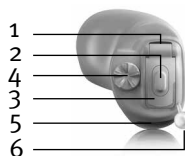
☐ Full shell directional



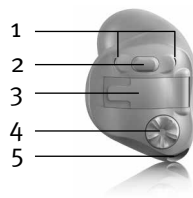
☐ Mini canal directional



☐ Mini canal omni



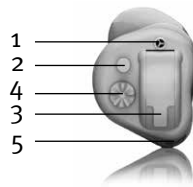
☐ Half shell / canal directional



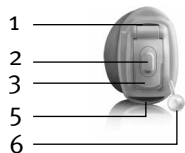
☐ CIC (Completely-in-the-canal)



☐ Half shell/canal omni



☐ IIC (Invisible-in-the-canal)



Warnings

- ⚠ The intended use of hearing aids is to amplify and transmit sound to the ears and hereby compensate for impaired hearing. The hearing aids (specially programmed for each hearing loss) must only be used by the intended person. They should not be used by any other person as they could damage hearing.
- ⚠ Hearing aids should only be used as directed by your physician or hearing healthcare professional.
- ⚠ Hearing aids will not restore normal hearing and will not prevent or improve a hearing impairment resulting from organic conditions.
- ⚠ Do not use your hearing aids in explosion hazard areas.
- ⚠ Allergic reactions to hearing aids are unlikely. However, if you experience itching, redness, soreness, inflammation or a burning sensation in or around your ears, inform

your hearing healthcare professional and contact your physician.

- ⚠ In the unlikely case that any parts remain in the ear canal after the removal of the hearing aid, contact a physician immediately.
- ⚠ Remove your hearing aids for CT and MRI scans or for other electromagnetic procedures.
- ⚠ Special care should be exercised in wearing hearing aids when maximum sound pressure levels exceed 132 decibels. There may be a risk of impairing your remaining hearing. Speak with your hearing healthcare professional to ensure the maximum output of your hearing aids is suitable for your particular hearing loss.

Magnet and battery warnings

- ⚠ Never leave hearing aids, batteries or magnets where small children and pets can reach them. Never put hearing aids or batteries in your mouth. If a hearing aid or battery is swallowed, call a physician immediately.

- ⚠ The magnet may affect some medical devices or electronic systems. Always keep the magnet (or the telephone equipped with the magnet) at least 30 cm (12”) away from pacemakers, credit cards or other magnetically sensitive devices.
- ⚠ Too high distortion during dialing or phoning may mean that the phone handset is stressed by the magnet. To avoid any damage, please move the magnet to another place on the telephone receiver.

Precautions

- ① The use of hearing aids is only part of hearing rehabilitation; auditory training and lip reading instruction may be required as well.
- ① In most cases, infrequent use of hearing aids does not provide full benefit. Once you have become accustomed to your hearing aids, wear your hearing aids everyday all day.

- ① Your hearing aids use the most modern components to provide the best possible sound quality in every listening situation. However, communication devices such as digital cell phones can create interference (a buzzing sound) in hearing aids. If you experience interference from a cell phone being used close by, you can minimize this interference in a number of ways. Switch your hearing aids to another program, turn your head in a different direction or locate the cell phone and move away from it.

Labeling


The serial number and year of manufacture are located on the outside of the hearing aid.

Cell phone compatibility rating

Some hearing aid users have reported a buzzing sound in their hearing aids when they are using cell phones, indicating that the cell phone and hearing aid may not be compatible. According to the ANSI C63.19 standard (ANSI C63.19-2006 American National Standard Methods of Measurement of Compatibility Between Wireless Communications Devices and Hearing Aids), the compatibility of a particular hearing aid and cell phone can be predicted by adding the rating for the hearing aid immunity to the rating for the cell phone emissions. For example, the sum of the hearing aid rating of 4 (M₄) and a telephone rating of 3 (M₃) would result in a combined rating of 7. Any combined rating that equals at least 5 would provide “normal use”; a combined rating of 6 or greater would indicate “excellent performance.”

The immunity of this hearing aid is at least M₄/T₄*. The equipment performance measurements, categories and system classifications are based upon the best information available but cannot guarantee that all users will be satisfied.

* For models featuring a telecoil input option

 **Note:** The performance of the individual hearing aids may vary with individual cell phones. Therefore, please try this hearing aid with your cell phone or, if you are purchasing a new phone, please be sure to try it with your hearing aid prior to purchase. For additional guidance, please ask your hearing healthcare professional for the booklet entitled “Hearing aid compatibility with digital wireless cell phones.”

SoundCore technology

SoundCore™ includes four intelligent features working together to understand your listening environment making the fluid adjustments needed so you can actively participate in every conversation across every environment.

EarMatch

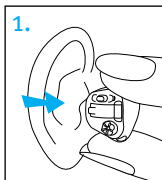
The EarMatch™ process provides the best personalized performance by compensating for your unique ear shape.

Putting your hearing aids in your ears

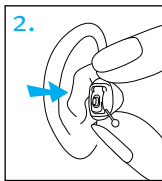
Your hearing aids may be color-coded on the battery door and/or the label on the hearing aid: red = right ear; blue = left ear.

Inserting your hearing aid

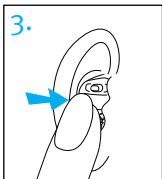
1. Hold the hearing aid between your thumb and index finger with the battery door facing away from your ear.



2. If your hearing aid has a removal handle, insert by holding the hearing aid with the removal handle at the bottom.

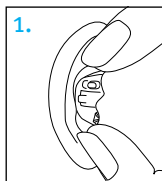



3. Gently insert the canal portion of the hearing aid into your ear using your index finger to push back and tuck the hearing aid completely into place. It should fit snugly and comfortably. Gently pull down and back on your earlobe to help you insert the hearing aid into your ear canal more easily.



Removing your hearing aid

1. To remove your hearing aid, grasp it with your thumb and index finger. If your hearing aid has a removal handle, gently pull on it to remove your hearing aid.
2. Move your jaw up and down or apply pressure to the back of your ear to help loosen the hearing aid.




 **Note:** Do not use the controls or the battery door to remove your hearing aids.

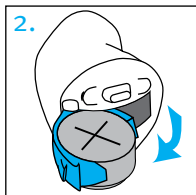
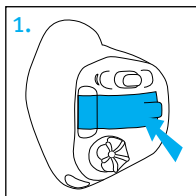
Turning your hearing aids on and off

The battery door acts as an on and off switch.

1. **On:** Close the battery door fully.

 **Note:** When you first turn your hearing aid on, the push button functionality may have a delay before it is active to prevent pressing it unintentionally during insertion

2. **Off:** Open the battery door to turn off the hearing aid and change the battery.




Battery information

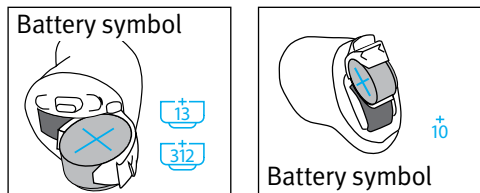
Low battery warning

Two long beeps indicate the hearing aid battery is low. After the low battery warning, sounds may not be as clear. This is normal and can be fixed by changing the batteries.


If you can't hear the low battery warning, your hearing healthcare professional can change its pitch or loudness. If you prefer, it can be turned off entirely.

 Your hearing aids are designed to generate a low battery warning every 30 minutes until you change the batteries, but depending on the condition of the batteries, they may die before another low battery warning occurs. Therefore, it is recommended that the batteries are replaced as soon as possible once you hear the low battery warning.

Replacing the battery



1. Gently swing out the battery door with your fingernail.
2. Grasp the battery with your thumb and index finger and remove.
3. Insert the new battery into the battery compartment with the plus (+) sign on the battery facing the same way as the battery indicator on the battery door. This will ensure that the battery door closes properly.

 **Note:** If the battery is inserted incorrectly, the hearing aid will not turn on.

4. Close the battery door.

Caring for batteries

- Always discard batteries in a safe and environmentally friendly way.
- To prolong battery life, remember to turn your hearing aids off when not in use, especially when asleep.
- Remove the batteries and keep the battery door open while hearing aids are not being worn, especially when asleep. This will allow internal moisture to evaporate.

Tinnitus masker




Tinnitus masker uses broadband noise to provide temporary relief of tinnitus.

Tinnitus masker warnings

- ⚠ The tinnitus masker is a broadband sound generator. It provides a means of sound enrichment therapy that can be used as part of a personalized tinnitus management program to provide temporary relief from tinnitus.
- ⚠ The underlying principle of sound enrichment is to provide supplementary noise stimulation which can help defocus your attention from your tinnitus and avoid negative reactions. Sound enrichment, coupled with instructional counseling, is an established approach to managing tinnitus.
- ⚠ Air conduction hearing aids with the tinnitus masker are to be fitted by a hearing healthcare professional familiar with the diagnosis and management of tinnitus.

- ⚠ Should you develop any side effects while using the tinnitus masker, such as headaches, nausea, dizziness or heart palpitations or experience a decrease in auditory function such as decreased loudness tolerance, worsening of tinnitus, or speech not as clear, you should discontinue use of the device and seek medical attention.
- ⚠ The volume of the tinnitus masker can be set to a level which could lead to permanent hearing damage when used for a prolonged period of time. Should the tinnitus masker be set to such a level in your hearing aid, your hearing healthcare professional will advise you of the maximum amount of time per day you should use the tinnitus masker. The tinnitus masker should never be used at uncomfortable levels.

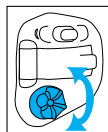
Important information

-  The tinnitus masker generates sounds that are used as part of your personalized temporary tinnitus management program to provide relief from tinnitus. It should always be used as prescribed by a hearing healthcare professional who is familiar with the diagnosis and treatment of tinnitus.
-  Good health practice requires that a person reporting tinnitus have a medical evaluation by a licensed ear physician before using a sound generator. The purpose of such an evaluation is to ensure that medically treatable conditions, which may be causing tinnitus, are identified and treated prior to using a sound generator.
-  The tinnitus masker is intended for adults 18 years of age or older who have both hearing loss and tinnitus.

Operating instructions

Your hearing aids may come with two controls that allow you to further adjust them – a rotary dial and a push button. Your hearing aids may also come with an IIC remote.

Rotary dial



The rotary dial on your hearing aids can be set up as a volume control.

☐ Volume control

If the rotary dial has been configured as a volume control:

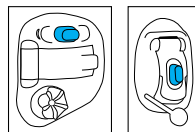
- Rotate dial slowly forward towards your nose to increase the volume
- Rotate the dial slowly backward away from your nose to decrease the volume

The optional remote control also allows you to adjust your volume levels; please refer to the remote control user guide for more information.

As you change the volume level, your hearing aids will beep.

Volume setting	Beeps
Suggested volume level	♪ 1 beep
Turning volume up	♪ short beep
Turning volume down	♪ short beep
Maximum volume level	♪♪ 2 beeps
Minimum volume level	♪♪ 2 beeps

Push button



The push button on your hearing aids can be either a program control, a volume control or a combination of both.

□ Program control

If the push button has been configured as a program control, each time you push the button, you will move to a different hearing aid program. Your hearing aids beep to indicate which program you are in.

Program setting	Beeps
Program 1 (e.g. automatic program)	♪ 1 beep
Program 2 (e.g. speech in noise)	♪♪ 2 beeps
Program 3 (e.g. easy-t/telephone)	♪♪♪ 3 beeps
Program 4 (e.g. music)	♪♪♪♪ 4 beeps
Easy-t/telephone	♪♪♪ short melody
DuoLink (if enabled)	Opposite ear beeps the same as side being adjusted

Please see the front of this booklet for a listing of your personalized programs.

□ Volume control

If your push button has been configured as a volume control, either:

- Push the button on your right hearing aid to increase the volume, and
- Push the button on your left hearing aid to decrease the volume

or:

- Push the button to step through your volume levels

As you change the volume control, your hearing aids will beep.

Volume setting	Beeps
Suggested volume level	 1 beep
Turning volume up	 short beep
Turning volume down	 short beep
Maximum volume level	 2 beeps
Minimum volume level	 2 beeps

□ Program/volume control push button

If your hearing healthcare professional has configured one hearing aid to be a program control and the other hearing aid to be a volume control:

- Push the button on your □right / □left hearing aid to access your different programs, and
- Push the button on your □right / □left hearing aid to step through your volume levels

Tinnitus masker

If your hearing healthcare professional has configured both a tinnitus masker program and a volume control, you can adjust the tinnitus masker level while you are in the tinnitus masker program. To adjust the noise level, either:

- Rotary dial
 - Rotate dial slowly forward towards your nose to increase tinnitus masker, and
 - Rotate the dial slowly backward away from your nose to decrease the tinnitus masker
- Push button (right/left)
 - Push the button on your right hearing aid to increase the tinnitus masker, and
 - Push the button on your left hearing aid to decrease the tinnitus masker
- Push button (steps)
 - Push the button to step through your tinnitus masker volume levels

As you change the level, your hearing aids will beep.

DuoLink

If DuoLink is enabled, when you change the volume or program settings on one hearing aid, the other one changes as well. DuoLink works for both the push button and the rotary dial.

For example, if your push button is configured as a program control and DuoLink is enabled, when you push the button on one hearing aid, the program will change on both hearing aids.

Using the telephone

□ Push button

Your hearing healthcare professional may have set up a phone program on your hearing aids that you can access using the push button or optional remote control.

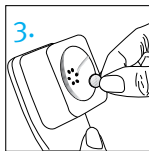
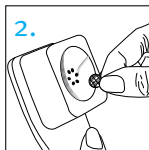
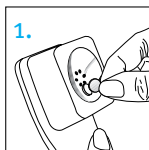
□ Easy-t

Your hearing aids may also have a telephone feature, which automatically switches to a dedicated telephone program when a receiver is brought close to one of your hearing aids. You will hear a short melody when you switch to the easy-t program. When the receiver is moved away from the hearing aid it will automatically return to the previous listening program.

If your hearing aid doesn't automatically switch to the easy-t program when a receiver is held to your ear, you may need to attach an easy-t magnet to your telephone. The magnet is designed to strengthen the magnetic field at the earpiece of the telephone.

To attach the optional magnet:

1. Clean the telephone receiver. Hold the magnet near the “listening end” of your telephone receiver and release it. The magnet will flip to the appropriate side and seek the optimal position on the telephone receiver.
2. Place the double-sided tape in this optimal position on the telephone receiver.
3. Attach the magnet to the tape.



Your hearing healthcare professional may also have set up a phone program that you can access through your optional remote control.

Binaural Phone

The Binaural Phone feature allows you to hold a phone to one ear and hear the sound clearly in both ears. No accessories are required.

Binaural Phone is available in your hearing aids through:

- ☐ Push button
- ☐ Easy-t






If your hearing aids are configured to work with the wireless uDirect™ or uStream streamers, you might benefit from a Bluetooth® hands-free option. Refer to the uDirect or uStream user guide for more information.

Protecting your hearing aids

- Open the battery door when not in use.
- Always remove your hearing aids when using hair care products. The hearing aids can become clogged and cease to function properly.
- Do not wear your hearing aids in the bath or shower or immerse them in water.
- If your hearing aids do become wet, do not attempt to dry them in an oven or microwave. Do not adjust any controls. Open the battery doors immediately, and allow your hearing aids to dry naturally for 24 hours.
- Protect your hearing aids from excessive heat (hair dryer, vehicle glove box or dashboard).
- Regular use of a dehumidifier, such as a Dri-Aid kit, can help prevent corrosion and prolong the life of your hearing aids.
- Do not drop your hearing aids or knock them against hard surfaces.

Cleaning your hearing aids

Use a soft cloth to clean your hearing aid at the end of each day, and place it in its case with the battery door open to allow moisture to evaporate.

-  Ear wax is natural and common. Ensuring your hearing aids are free of ear wax is an important step in your daily cleaning and maintenance routine.
-  Using the brush that was provided with your hearing aids, clean ear wax from your hearing aids everyday.
-  Never use alcohol to clean your hearing aids.
-  Do not use sharp tools to dislodge ear wax. Sticking household items into your hearing aids can seriously damage them.
-  Talk to your hearing healthcare professional about regular appointments to have the wax removed from your hearing aids.

Accessories

The uDirect, uStream, uMic™, uTV™ and a remote control are optional accessories that may be available for your hearing aids.

uDirect 3, uStream and uTV 3

uDirect and uStream are streamers that provide easy, hands-free access to Bluetooth enabled devices, such as mobile phones. They can provide remote control functions to adjust your hearing aids for increased listening comfort. uDirect also has a wired audio jack to plug in devices like MP3 players.

uTV is used with a streamer (uDirect or uStream) to send sound from your TV directly to your hearing aids. The uTV can also transmit sound from stereo systems, computers and other audio sources.

For more information on using the uDirect, uStream or uTV, please see the user guide for that accessory. For information on how to get a streamer or uTV accessory, please contact your hearing healthcare professional.

uMic

uMic is a personal wireless microphone system that lets you hear conversations better in noisy environments, through either uStream or uDirect.

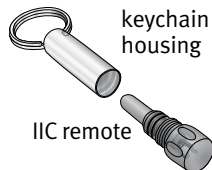
Remote control

Your hearing aids may also come with an optional remote control which allows you to switch between different listening programs, and change your volume settings.

IIC remote

- ⚠ The IIC remote contains a magnet. If you use a medical device like a pacemaker or ICD device (implantable cardioverter defibrillator), please read the specific user guide to clarify possible impact of magnetic fields to your medical device.
- ⚠ Do not place the IIC remote (neither open nor closed) in your breast pocket. Keep a distance of at least 15 cm (6 inches) between the IIC remote and your medical device.

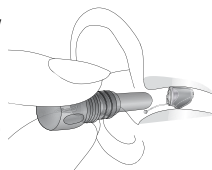
The IIC remote contains a magnet that functions like a remote control to change the settings of your hearing aids.



Your hearing aids, in combination with IIC remote, can be configured as:

- ☐ Program switch
- ☐ Volume control

To use the IIC remote, unscrew the magnet from the keychain housing and hold it inside the ear canal without touching the hearing aid.



Assistive listening devices

Listening in public places

Telecoils pick up electromagnetic energy and convert it into sound. Your hearing aids may have a telecoil option that can help you listen in public places equipped with telecoil compatible assistive listening devices such as a loop system. When you see this symbol, a loop system is present and may be compatible with your hearing aids. Please contact your hearing healthcare professional for more information on loop systems.



Connecting to external audio sources

You can connect to external audio sources by using the uDirect optional wireless accessory. Ask your hearing healthcare professional for information about uDirect.

Troubleshooting guide

Cause	Possible remedy
No sound	
Not turned on	Turn on
Low/dead battery	Replace battery
Poor battery contact	Consult your hearing healthcare professional
Battery upside down	Insert battery plus (+) side up
Hearing aids blocked with ear wax	See “Cleaning your hearing aids.” Consult your hearing healthcare professional

Cause	Possible remedy
Not loud enough	
Low volume	Turn up volume; see hearing healthcare professional for models without a manual volume control or if problem persists
Low battery	Replace battery
Hearing aids not inserted properly	See “Putting your hearing aids in your ears.” Remove and reinsert carefully
Change in hearing	Consult your hearing healthcare professional
Hearing aids blocked with ear wax	See “Cleaning your hearing aids.” Consult your hearing healthcare professional

Cause	Possible remedy
Intermittent	
Low battery	Replace battery
Dirty battery contact	Consult your hearing healthcare professional
Two long beeps	
Low battery	Replace battery
Whistling	
Hearing aids not inserted properly	See “Putting your hearing aids in your ears.” Remove and reinsert carefully
Hand/clothing near ear	Move hand/clothing away from your ear
Poorly fitting hearing aids	Consult your hearing healthcare professional

Cause	Possible remedy
Not clear, distorted	
Poorly fitting hearing aids	Consult your hearing healthcare professional
Hearing aids blocked with ear wax	See “Cleaning your hearing aids.” Consult your hearing healthcare professional
Low battery	Replace battery
Weak on the telephone	
Low volume	Turn up volume
Telephone not positioned properly	Move telephone receiver around ear for clearer signal. See “Using the telephone”
Hearing aid requires adjustment	Consult your hearing healthcare professional

For any problems not listed in the guide, contact your hearing healthcare professional.

Warning to hearing aid dispensers (to comply with the U.S. Food and Drug Administration (FDA) regulations)

A hearing aid dispenser should advise a prospective hearing aid user to consult promptly with a licensed physician (preferably an ear specialist) before dispensing a hearing aid if the hearing aid dispenser determines through inquiry, actual observation, or review of any other available information concerning the prospective user, that the prospective user has any of the following conditions: (i) Visible congenital or traumatic deformity of the ear. (ii) History of active drainage from the ear within the previous 90 days. (iii) History of sudden or rapidly progressive hearing loss within the previous 90 days. (iv) Acute or chronic dizziness. (v) Unilateral hearing loss of sudden or recent onset within the previous 90 days. (vi) Audiometric air-bone gap equal to or greater than 15 decibels at 500 hertz (Hz), 1,000 Hz, and 2,000 Hz. (vii) Visible evidence of significant cerumen accumulation or a foreign body in the ear canal. (viii) Pain or discomfort in the ear. Special care should be exercised in selecting and fitting a hearing aid whose maximum sound pressure level exceeds 132 decibels because there may be risk of impairing the remaining hearing of the hearing aid user. [This provision is required only for those hearing aids with a maximum sound pressure capability greater than 132 decibels (dB).]

Important notice for prospective hearing aid users

Good health practice requires that a person with a hearing loss have a medical evaluation by a licensed physician (preferably a physician who specializes in diseases of the ear) before purchasing a hearing aid. Licensed physicians who specialize in diseases of the ear are often referred to as otolaryngologists, otologists or otorhinolaryngologists.

The purpose of medical evaluation is to assure that all medically treatable conditions that may affect hearing are identified and treated before the hearing aid is purchased. Following the medical evaluation, the physician will give you a written statement that states that your hearing loss has been medically evaluated and that you may be considered a candidate for a hearing aid. The physician will refer you to an audiologist or a hearing aid dispenser, as appropriate, for a hearing aid evaluation. The audiologist or hearing aid dispenser will conduct a hearing aid evaluation to assess your ability to hear with and without a hearing aid. The hearing aid evaluation will enable the audiologist or dispenser to select and fit a hearing aid to your individual needs. If you have reservations about your ability to adapt to amplification, you should inquire about the availability of a trial-rental or purchase-option program. Many hearing aid dispensers now offer programs that permit you to wear a hearing aid for a period of time for a nominal fee after which you may decide if you want to purchase the hearing aid. Federal law restricts the sale of hearing aids to those individuals who have obtained a medical evaluation from a licensed physician. Federal law permits a fully informed adult to sign a waiver statement declining the medical evaluation for religious or personal beliefs that preclude consultation with a physician. The exercise of such a waiver is not in your best health interest and its use is strongly discouraged.

Children with hearing loss

In addition to seeing a physician for a medical evaluation, a child with a hearing loss should be directed to an audiologist for evaluation and rehabilitation since hearing loss may cause problems in language development and the educational and social growth of a child. An audiologist is qualified by training and experience to assist in the evaluation and rehabilitation of a child with a hearing loss.

Information and explanation of symbols



With the CE symbol, Unitron confirms that this Unitron product – including accessories – meets the requirements of the Medical Devices Directive 93/42/EEC as well as the Radio Equipment Directive 2014/53/EU on radio and telecommunications transmitters.

The numbers after the CE symbol correspond to the code of certified institutions that were consulted under the above-mentioned directives.



This symbol indicates that it is important for the user to read and take into account the relevant information in this user guide.



This symbol indicates that it is important for the user to pay attention to the relevant warning notices in this user guide.



Important information for handling and effective use of the product.



Australia and New Zealand EMC and Radiocommunications compliance label.



This symbol indicates that the products described in these user instructions adhere to the requirements for an application part of Type B of EN 60601-1. The surface of the hearing aid is specified as applied part of Type B.



Copyright symbol



This symbol shall be accompanied by the name and the address of the authorised representative in the European Community.



This symbol shall be accompanied by the name and the address of the manufacturer (who are placing this device on the market).

Operating conditions:

This device is designed such that it functions without problems or restrictions if used as intended, unless otherwise noted in these user guides.


Transport conditions:

Temperature: -20° to +60° Celsius (-4° to +140° Fahrenheit).

Humidity: Up to 90% (non condensing).



The symbol with the crossed-out garbage bin is to make you aware that this device may not be thrown away as normal household waste. Please dispose of old or unused devices, at waste disposal sites intended for electronic waste, or give your device to your hearing healthcare professional for disposal. Proper disposal protects the environment and health.

 **Bluetooth** The Bluetooth® word mark and logos are registered trademarks owned by Bluetooth SIG, Inc. and any use of such marks by Unitron is under license. Other trademarks and trade names are those of their respective owners.

Insera Insera is a trademark of Unitron.

Compliance information

Declaration of conformity

Hereby, Unitron Hearing declares that this product meets the requirements of the Medical Device Directive 93/42/EEC and complies with Radio Equipment Directive 2014/53/EU. The full text of the Declarations of Conformity can be obtained from the manufacturer.

The hearing aid described in this user guide is certified under:
Standard hearing system

	USA - FCC ID:	Canada - IC:
T Insera ITE 13, 312	VMY-UWITE2	2756A-UWITE2
T Insera ITE 10A	VMY-UWITE3	2756A-UWITE3
T Insera ITE 10A omni	VMY-UWITE4	2756A-UWITE4

Notice 1

This device complies with Part 15 of the FCC Rules and with RSS-210 of Industry Canada. Operation is subject to the following two conditions:

- 1) this device may not cause harmful interference, and
- 2) this device must accept any interference received, including interference that may cause undesirable operation.

Notice 2

Changes or modifications made to this device not expressly approved by Unitron may void the FCC authorization to operate this device.

Notice 3

This device has been tested and found to comply with the limits for a Class B digital device, pursuant to Part 15 of the FCC Rules and ICES-003 of Industry Canada. These limits are designed to provide reasonable protection against harmful interference in a residential installation. This device generates, uses and can radiate radio frequency energy and, if not installed and used in accordance with the instructions, may cause harmful interference to radio communications. However, there is no guarantee that interference will not occur in a particular installation. If this device does cause harmful interference to radio or television reception, which can be determined by turning the equipment off and on, the user is encouraged to try to correct the interference by one or more of the following measures:

- Reorient or relocate the receiving antenna
- Increase the separation between the equipment and receiver
- Connect the device into an outlet on a circuit different from that to which the receiver is connected
- Consult the dealer or an experienced radio/TV technician for help



Australia: Supplier Code Number N15398

New Zealand: Supplier Code Number Z1285

Patient feedback

Record your specific needs or concerns and bring to your first office visit after getting your hearing aids.

This will help your hearing healthcare professional to address your needs.

☐ _____

☐ _____

☐ _____

☐ _____

☐ _____

[illegible]

EC	REP
----	-----

For a listing of Unitron group companies, please visit www.unitron.com





unitron.com

Distributor

sonova

